

Transducers

C5-2D



2 - 5 MHz
Curved Array

L17-7SD



7 - 17 MHz
High Frequency Compact
Linear Array

MC8-4D



4 - 8 MHz
Micro Convex Array

MC9-3TD



3 - 9 MHz
Micro Convex Array

P5-1D



1 - 5 MHz
Phased Array

L12-5D



5 - 12 MHz
Linear Array

About Edan

Edan is a healthcare company dedicated to improving the human condition around the world by delivering value-driven, innovative and high-quality medical products and services. For over 20 years, Edan has been pioneering a comprehensive line of medical solutions that address a broad range of healthcare practices including:

- Diagnostic ECG
- Patient Monitoring
- OB/GYN
- Ultrasound Imaging
- Point-of-Care Testing
- *In-Vitro* Diagnostics
- Veterinary

Healthcare professionals around the world depend on Edan's breakthrough medical technologies and outstanding customer support.



U.S. and Canada inquiries:

EDAN Diagnostics, Inc. | 9833 Pacific Heights Blvd., Suite E/F
San Diego, CA 92121-4707 | +1.858.750.3066
www.edandiagnostics.com | edan-info@edandiagnostics.com

Inquiries outside of the U.S. and Canada:

Edan Instruments, Inc. | No.15 Jinhui Rd., Jinsha Community,
Kengzi Subdistrict, Pingshan District, Shenzhen | 518122 P.R. China
+86.755.26898326 | www.edan.com.cn | info@edan.com.cn

© 2019 Edan Instruments, Inc. All rights reserved. Features and specifications are subject to change without prior notice. No reproduction, copy or transmission may be made without written permission. Not all products or features are available in all countries, contact Edan for local availability.



ENG-US-LX4-VET-V1.0-20180713

Rewrite The Standard of Value

Acclarix™ LX4 VET
Diagnostic Ultrasound System



Diagnostic Ultrasound System

When it comes to stability , performance and efficiency - there is one ultrasound system that delivers more in veterinary.

Innovative Design

- 21" tilt-and-swivel LCD monitor
- 10" high sensitivity touch screen
- Motorized height adjustment with 20-cm

Version Veterinary Applications

- Comprehensive transducers and presets for veterinary

Advanced imaging technologies

- Tissue Adaptive Imaging
- Spatial Compound Imaging
- Speckle Reduction Imaging

User-friendly Workflow

- Unique " gesture " control providing quick response
- Brand new operation layout with rotary knob
- Down lit pull-out backlight keyboard
- Four active transducer ports



Superior Image Quality

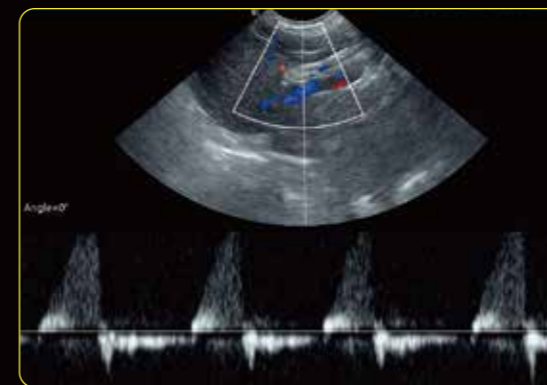
The LX4 VET displays outstanding contrast and uniformity image without sacrificing penetration in far field , also providing excellent color doppler image with high sensitivity and continuity.



Canine Heart



Canine Kidney



Canine Renal Artery Spectrum



Canine Renal Artery



Canine Renal Vessel



Feline Kidney