

Transducers

P12-4Q



4 - 12 MHz
Phased Array

P7-3Q



3 - 7 MHz
Pediatric Phased Array

MC8-4Q



4 - 8 MHz
Micro - Convex Array

L12-5HQ



5 - 12 MHz
High Element
Linear Array

P5-1Q



1 - 5 MHz
Phased Array

C5-2Q



2 - 5 MHz
Curved Array

About Edan

Edan is a healthcare company dedicated to improving the human condition around the world by delivering value-driven, innovative and high-quality medical products and services. For over 20 years, Edan has been pioneering a comprehensive line of medical solutions that address a broad range of healthcare practices including:

- Diagnostic ECG
- Patient Monitoring
- OB/GYN
- Ultrasound Imaging
- Point-of-Care Testing
- *In-Vitro* Diagnostics
- Veterinary

Healthcare professionals around the world depend on Edan's breakthrough medical technologies and outstanding customer support.



Global Headquarters:
Edan Instruments, Inc. | 15 Jinhui Road, Pingshan District, Shenzhen
518122 P.R. China | +86.755.26898326 | www.edan.com | info@edan.com

U.S. and Canada inquiries:
EDAN Diagnostics, Inc. | 9918 Via Pasar, San Diego, CA 92126
+1.858.750.3066 | www.edandiagnostics.com | edan-info@edandiagnostics.com

© Edan Instruments, Inc. All rights reserved. Features and specifications are subject to change without prior notice. No reproduction, copy or transmission may be made without written permission. Not all products or features are available in all countries, contact Edan for local availability.

ENG-US-LX9 VET
V1.1-20231017

Empowering Definitive Diagnosis

Acclarix™ LX9 VET
Veterinary Diagnostic Ultrasound System



Elegant Fusion of Specialty and Flexibility

When referring to performance, renovation and multiformity - there is one ultrasound system that delivers more. Developed specifically to address the challenges of complex ultrasound environments, the Acclarix™ LX9 Diagnostic Ultrasound System aims to provide precise diagnosis in versatile clinic application with uncompromising image quality, brilliant workflow and user-friendly operation.

- 21.5 inch high resolution LCD medical monitor
- 14 inch sensitive touch screen releasing efficient operation at fingertip
- Integrated user interface with 180° rotation and electronic height adjustment
- Extra-long continuous scanning time owing to two built-in batteries



21.5 inch LCD monitor

14 inch sensitive touch screen

Auto lifting user panel support left and right rotation

Physical keyboard with back light

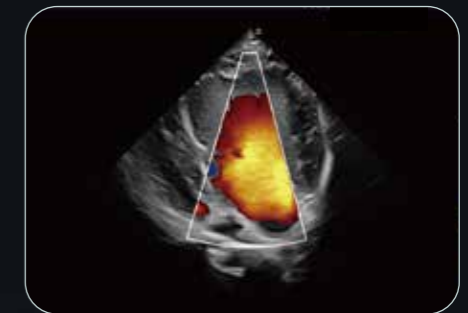
ECG port

5 activated transducer sockets

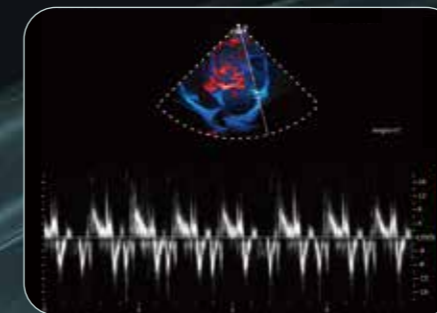
Flexible "Z" arm



Canine Heart-Short Axis of Aorta



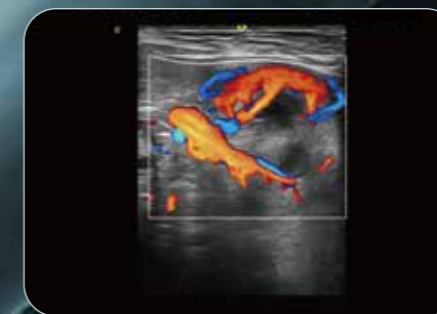
Canine Heart-Two Chambers



Canine Heart-TDI



Canine Heart-Long Axis of LV



Canine Abdomen- Renal Flow



Feline Abdomen-Long Axis of Kidney

Stunning Clarity

Definitive image quality

As the most high-end level system from Edan, Acclarix LX9 offering stunning image quality and reliable functional workflow to satisfy GI doctors' need on daily scanning and diagnosis, which can be installed in any departments you want for sonography.

- High fidelity, high-channel count architecture results in superb detail resolution, particularly at depth
- Tissue Adaptive Imaging (TAI) continuously and automatically optimizes imaging allowing more focus on the patient
 - In B-mode, TAI fine tunes multiple parameters to provide the best possible image quality
 - In Doppler, TAI automatically adjusts for flow state providing improved continuity, border detection and fill-in