



# i15 VET

Blood Gas and Chemistry Analysis System

Parameter	Reportable Range	Resolution	Measurement method
pH (pH units)	6.5 – 8.20	0.001	Potentiometric sensor
pO <sub>2</sub> (mmHg)	10 – 700	0.1	Amperometric sensor
pCO <sub>2</sub> (mmHg)	10 – 150	0.1	Potentiometric sensor
Na (mmol/L)	100 – 180	0.1	Potentiometric sensor
K (mmol/L)	2.0 – 9.0	0.01	Potentiometric sensor
Ca (mmol/L)	0.25 – 2.5	0.01	Potentiometric sensor
Cl (mmol/L)	65 – 140	0.1	Potentiometric sensor
Glu (mg/dL or mmol/L)	20 – 700\1.1 – 38.9	1/0.1	Amperometric sensor
Lac (mg/dL or mmol/L)	0.3 -20\ 2.7 – 180.2	0.01/0.1	Amperometric sensor
Hct (%PCV or Fraction)	10 – 75 0.10 – 0.75	1%/0.01	Conductance sensor

## Specification

Throughput	Results in 1 minute after sample aspiration
Sample volume	110uL
Quality control	3 or 5 levels QC, External electronic simulator
Display	7-inch color LCD Display, 800*480
Interface	4 x USB 2.0 host, 1 x RS232, WLAN
Input device	Touch screen and barcode scanner
Power supply	100-240VAC, 50/60Hz
Battery	4200mAh rechargeable lithium-ion battery, 50 samples continuous testing
Dimensions (W*H*D)	238*153*310 mm
Weight	3.65 KG
Operation Environment	10 °C-31 °C; %RH: 25%-80%; 700 -1066 KPa

## About Edan

Edan is a healthcare company dedicated to improving the human condition around the world by delivering value-driven, innovative and high-quality medical products and services. For over 20 years, Edan has been pioneering a comprehensive line of medical solutions that address a broad range of healthcare practices including:

- Diagnostic ECG
- Patient Monitoring
- OB/GYN
- Ultrasound Imaging
- Point-of-Care Testing
- In-Vitro Diagnostics
- Veterinary

Healthcare professionals around the world depend on Edan's breakthrough medical technologies and outstanding customer support.



Edan Instruments, Inc. | 3/F-B, Nanshan Medical Equipments Park,  
1019# Nanhai Rd., Shenzhen | 518067 P.R. China  
+86.755.26898326 | www.edan.com.cn | info@edan.com.cn



ENG-POCT-I15 VET-V2.0-20150120

© 2015 Edan Instruments, Inc. All rights reserved. Features and specifications are subject to change without prior notice. No reproduction, copy or transmission may be made without written permission.

# i15 VET

Blood Gas and Chemistry Analyzer





i15 trailer

### Portable, lightweight

- Capable to run 50 samples with fully-charged battery
- Diagnose at the point of care, patient side, out in the field or exam room

### Easy, Quick and Convenient

- Zero maintenance
- Minimize hands on time and training requirement
- Auto-sampling
- Report is ready within one minute after sample aspiration

### Accurate and Reliable

- Innovative microchip liquid control technology and micro-sensor multifunction membrane technology
- High sensitivity and accuracy
- Calibrator, Control and Electronic simulator to TRIPLE guarantee the RESULTS!

### Flexible Data Management

- Acquire patients' information via barcode/QR code
- Up to 10,000 patient data storage
- 4 USB ports and LAN/WiFi for data management
- Optional data management software

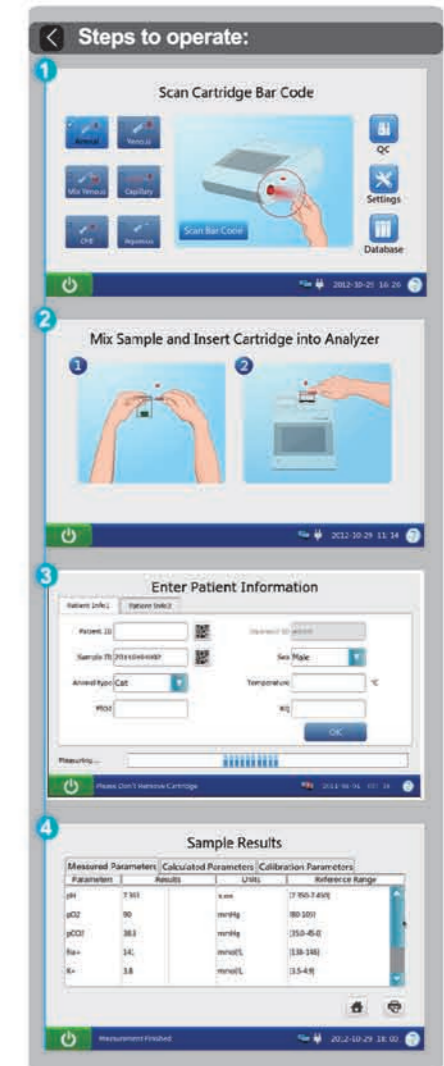
### Multi-parameter cartridge

- Multi popular time-sensitive parameters come in one cartridge, including ABG, electrolytes and metabolites
- Single-use cartridge avoids contamination
- Room temperature storage with long shelf-life



Portable and lightweight

Touch screen with built-in multimedia tutorials



# i15 VET

Blood Gas and Chemistry Analyzer

i15 VET Quality Control System  
Triple Guarantee the Result



### Variety of test Cartridges

	pH	pCO <sub>2</sub>	pO <sub>2</sub>	Na	K	Cl	Ca	Hct	Glu	Lac
BG3	—	—	—	—	—	—	—	—	—	—
BG8	—	—	—	—	—	—	—	—	—	—
BG4	—	—	—	—	—	—	—	—	—	—
BG9	—	—	—	—	—	—	—	—	—	—
BG10	—	—	—	—	—	—	—	—	—	—
BC4	—	—	—	—	—	—	—	—	—	—

Calculated values: cH+, HCO<sub>3</sub>-act, HCO<sub>3</sub>-std, BE(ecf), BE(B), BB(B), ctCO<sub>2</sub>, sO<sub>2</sub>(est), Ca++(7.4), AnGap, tHb(est), pO<sub>2</sub>(A-a), pO<sub>2</sub>(a/A), RI, pO<sub>2</sub>/FIO<sub>2</sub>, cH+(T), pH(T), pCO<sub>2</sub>(T), pO<sub>2</sub>(T), pO<sub>2</sub>(A-a)(T), pO<sub>2</sub>(a/A)(T), RI(T), pO<sub>2</sub>(T)/FIO<sub>2</sub>

Future menu in development: BUN/Urea & Creatinine, Coagulation test (ACT, APTT, PT), Immunoassay panels