

# Transducers

L12-5Q



5 - 12 MHz  
Linear Array  
Small parts, abdomen

L17-7Q



7 - 17 MHz  
Linear Array  
Small parts, exotics

C5-2Q



2 - 5 MHz  
Curved Array  
Large breed abdomen

MC8-4Q



4 - 8 MHz  
Micro-convex Array  
Abdomen, basic cardiac

P5-1Q



1 - 5 MHz  
Phased Array

P7-3Q



3 - 8 MHz  
Phased Array

VEL12-5Q



5 - 12 MHz  
Endocavity Linear Array

VEL8-3WQ



3 - 8 MHz  
Endorectal Linear Array

MC9-3TQ



3 - 9 MHz  
Micro-convex Array

MT-808



Trolley System

# Veterinarian Ultrasound Within a Touch

Acclarix™ AX3 VET  
Veterinary Diagnostic Ultrasound System



  
**EDAN**  
A world of potential

**U.S. and Canada inquiries:**

EDAN Diagnostics, Inc. | 9833 Pacific Heights Blvd., Suite E/F  
San Diego, CA 92121-4707 | +1.858.750.3066  
www.edandiagnostics.com | edan-info@edandiagnostics.com

**Inquiries outside of the U.S. and Canada:**

Edan Instruments, Inc. | No.15 Jinhui Rd., Jinsha Community,  
Kengzi Subdistrict, Pingshan District, Shenzhen | 518122 P.R. China  
+86.755.26898326 | www.edan.com.cn | info@edan.com.cn

© 2019 Edan Instruments, Inc. All rights reserved. Features and specifications are subject to change without prior notice. No reproduction, copy or transmission may be made without written permission. Not all products or features are available in all countries, contact Edan for local availability.



ENG-US-AX3 VET-V1.0-20190726

  
**EDAN**  
A world of potential



## Redefining Innovation Through Value and Performance

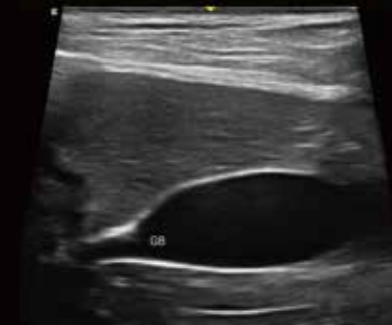
The Acclarix AX3 VET has been designed from the relentless focus on delivering uncompromising performance at a cost-effective price. Along with the unique dual-sockets and dual-batteries inspiration in a 4.5kg lightweight magnesium alloy body, the remarkable Acclarix AX3 VET delivers a surprising value to meet all the demands for animals.

## Intelligent Workflow

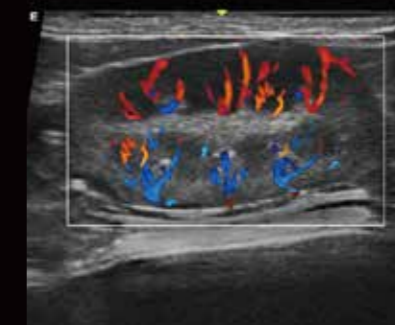
- High sensitive touch screen for daily operation
- Dedicated presets and measurement packages for veterinary applications
- Customizable user interface for personalized design
- Multiple data management methods: DICOM, network, PDF, AVI and BMP file export

## Definitive Image Quality

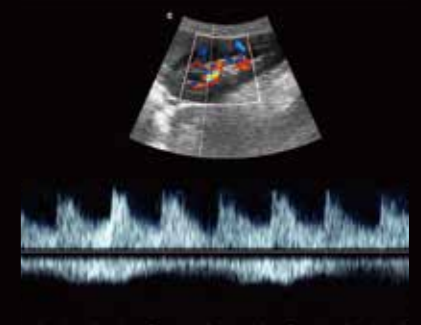
- Revolutionary platform results in superb detail resolution, particularly at depth.
- Tissue Adaptive Imaging (TAI) continuously and automatically optimizes imaging allowing more focus on different kinds of animals.



The display of canine gallbladder is excellent and the neck of it looks clear which is essential for diagnosis



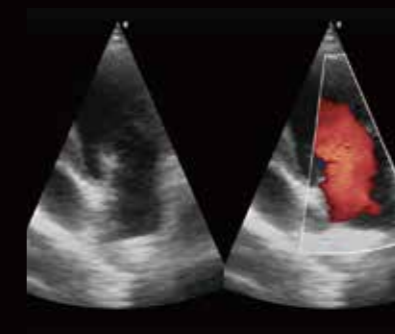
TAI provides excellent detail resolution and color sensitivity to display low flows in feline kidney



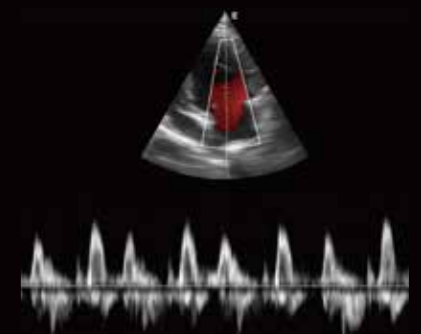
A perfect renal spectrum is advantageous for the evaluation of some important diagnostic indexes like PI and RI



The edge of this canine's bladder is smooth and internal echo is uniform which is significant for scanning



The adult phased array probe shows superb blood flow of cardiac examination even in large animals



The pediatric phased array probe delivers an excellent spectrum without any background noise especially for small animals

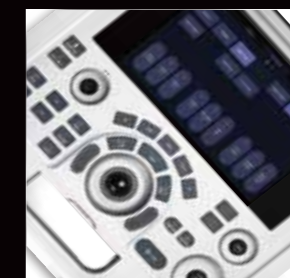
## Distinctive Design



Dual transducers design can simplify workflow and improve the diagnostic efficiency



Unique dual-batteries design support ultra-long continuous scanning more than two hours



Ergonomic control panel with high sensitive touch screen ensures everything at fingertips



Ultra-light and ultra-compact design facilitates maneuverability and portability