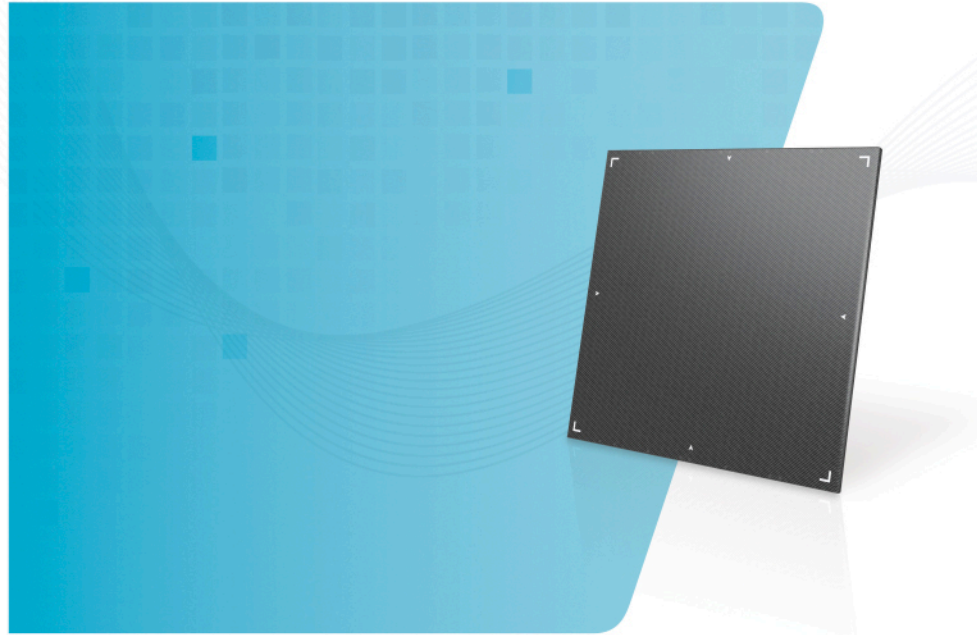
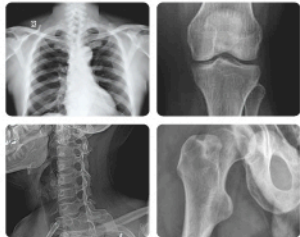


# ATAL 9

Wireless Flat-panel X-ray Detector

## Specifications

<b>Application</b>	General Radiography
<b>Sensor</b>	a-Si TFT array Flat Panel Detector
<b>Conversion Screen</b>	CaI/GOS
<b>Active Area</b>	17×17 inch(430mm×430mm)
<b>Sensor Pixel</b>	3,072×3,072(9.4M pixels)
<b>Image Data</b>	16 Bit
<b>Trigger Mode</b>	AED(Automatic Exposure Detection), Manual Trigger
<b>Calibration Mode</b>	ACC(Auto Calibration Control), Manual Calibration
<b>Data Transfer Time</b>	Less than 1 sec.
<b>Capture Cycle Time</b>	2 ~ 5 sec. (approx.)
<b>Wired Interface(Data Output)</b>	Gigabit Ethernet
<b>Voltage</b>	AC 100 ~ 240V ~, 50/60Hz
<b>Wireless Standard</b>	IEEE 802.11ac
<b>Battery</b>	Lithium Ion Polymer Battery
<b>Environment</b>	Storage : -10°C ~ 80°C, 10% ~ 90% RH(Non-condensing) Operation : 10°C ~ 35°C, 20% ~ 75% RH(Non-condensing)
<b>Dimensions(W×L×T)</b>	460mm×461mm×15mm
<b>Weight(W/O Battery)</b>	Wired : 2.75kg(6.0lb), Wireless : 3.00kg(6.6lb)



# ATLAIM

ATLAIM  
5F, SMART BAY, 123, Beolmal-ro, Dongan-gu, Anyang-si, Gyeonggi-do, 14056, Korea  
Tel. +82.70.4846.8888 Fax. +82.2.6455.2905  
sales@atlaim.com / atlaimsales@gmail.com

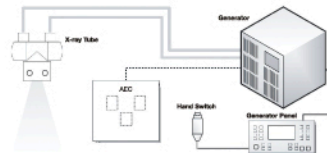
www.atlaim.com  
©2017 rev.4 ATLAIM



# ATLAIM

# A NEW CATEGORY OF WIRELESS DETECTOR

ATAL 9 (17x17 cassette-sized, wired and wireless detector) is the only detector of its kind. Its long battery life, high speed data transmission (Gigabits, 802.11ac) and light weight (Less than 3kg for 17x17 detector) will allow productivity and versatility.



No Line Connection



Configuration for Wired Mode

Configuration for Wireless Mode



## Gigabit Speed (Wi-Fi)

Considered much faster than conventional standards (i.e. 11a, 11b, 11n), ATAL 9 Wireless detector is equipped with IEEE 802.11ac. Gigabit data transfer reduces the chance of image loss after acquisition which other conventional wireless detectors are struggling with still. Fast speed increases power consumption efficiency so the battery life can be longer.



## Wireless & Wired

Instantly can be transformed to wired mode for power supply and data transfer using an off-the-shelf HDMI cable. Does not need to pay extra cost for optional connector which specially designed by detector manufacturer. With simple connection of HDMI cable, its application is wider at non-wireless environment.



## The Lightest Weight

With largest coverage of 17x17, Its weight is Less than 3kg without battery. The ATAL 9 has no weight penalty even though we offer 80% more image area than 14x17. Enjoy the largest image capture capability without weight barrier.



## Automatic Exposure Detection

ATAL 9 is equipped with Automatic Exposure Detection technology which does not need a generator connection to synchronize the exposure signal. AED allows upgrading of all different brands and models of generator. Skip these technical and electrical steps.



## All Day Battery

ATAL 9 is equipped with a battery which allows long hours of operation. It is designed with optimized power consumption technology and power saving mode such as ON/OFF switch. The ON/OFF switch makes it easily last through even an extended mobile work day.



## Evolution by Design The Future is Built in.

The technologies used in this detector are evolving every day. The USB 3.0 port is the window to update firmware and other functions available without sending the detector anywhere.



## Image Data Loss Protected

Under a poor wireless environment, patient image data might not be sent to workstation properly. ATAL 9 has internal memory which can save more than 15 images. Even more is available via the USB 3.0 port for easy image transfer.



## Auto Calibration Control

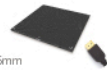
Calibration data is embedded in the detector. Periodic calibration or recalibration of the detector can generate many service issues in DR retrofits. This tedious and time-consuming step requiring a trained engineer is eliminated.

## Options

### 1 Wired (Tether)

HDMI tether provided for non-Wi-Fi installs

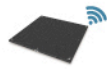
- Carbon fiber housing
- 2.75kg (6.0lb)
- Dimension : 460mm x 461mm x 15mm



### 2 Wireless (Only)

High speed wireless data

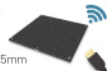
- IEEE 802.11AC
- (GIGABIT WI-FI) : Max. 1200Mb



### 3 Wireless & Wired

Easy switch to wired mode using HDMI cable

- 3.0kg (6.6lb)
- Dimension : 460mm x 461mm x 15mm
- IEEE 802.11AC
- (GIGABIT WI-FI) : Max. 1200Mb



## Applications

